

# LS40 The lightness meets the technology



**Compact**

Remote deposit capture and small teller applications:  
a perfect marriage with LS40

**Silent**

LS40 is designed to meet the needs of users with low volumes of documents to be processed, where is required to concentrate in a narrow space all the functionalities and keep them at hand by a simple and easy to use device.

**Full  
function**

Quite operations, robustness, usability and ergonomics that – together with a stylish design - make LS40 feel more than an entry level device. The new LS40 is addressed to Remote Deposit Capture (RDC) applications as well as for small volume scanning at the bank teller.

LS40 is a one-by-one scanner, providing professional imaging of checks and perfect reading of E13B code lines; processed documents can be given back on the front or on the rear, with a straight or “U” rail at your choice.

It may have several options, including an endorsement printer, badge reader, front personalization stamp, MICR reader, OCR and barcode recognition. Connection to the PC is via USB 2.0, while a full set of advanced programming tools that provide functions such as IQA (Image Quality Assurance) and virtual endorsement. An optionally integrated USB hub gives also the possibility to connect external peripherals such as fingerprint recognition or PINpad .

**LS40**

[www.ctsgroup.it](http://www.ctsgroup.it)





# LS40

## Lightness & technology

The LS40 offers together with an excellent hardware, also a full world of application development and integration software tools, common to CTS scanners range and available also as a class for .net developers. Checking the quality of captured images is made simple by the integrated IQA package, while the automatic data extraction is supported by free modules dedicated to OCR, PDF417 and barcodes. Windows and Linux operating platform are supported. The scanner drivers can also be provided in Twain compliant version and from third party hardware independent software providers.

### Basic unit features

- Manual drop document feeding
- Front and rear imaging camera

### Options

- MICR reader (CMC7/E13B ISO std 1004)
- OCR and ICR recognition by software interpretation
- BARCODE recognition by software interpretation
- Badge reader trk 1&2&3
- ID card scanning
- Endorsement printer, ink-jet, rear side, 1 print line position
- Front personalization stamp

### Image capture

- Resolution: 100 or 200 or 300 dpi, selectable
- Gray scale levels, 16 or 256
- Black & White conversion

### Communication and software

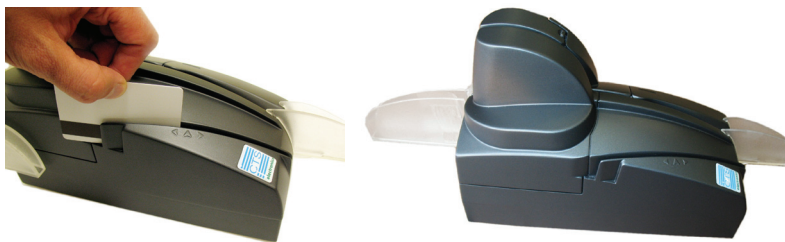
- USB 2.0, USB hub for additional peripherals
- Windows, Linux and Mac OSX operating platform supported
- Twain interface driver also available and from third part hardware independent software providers

### Supported documents characteristics

- Height: 60 ÷ 108 mm / 2.4 ÷ 4.25 in
- Length: 80 ÷ 225 mm / 31,5 ÷ 88,6 in
- Weight: 70 ÷ 120 gr/sqm / 0.01 ÷ 0.02 lb/sqf
- Thickness: 0.07 ÷ 0.12 mm / 0.0028 ÷ 0.0047 in

### Size & weight

- Dim: 175mm / 6.9 in (H); 240mm / 9.4 in (L); 100mm / 3.9 in (W)
- Weight: 2.0 kg / 4.41 lb, maximum



Small footprint

MICR reading

OCR decoding

Straight or U path

ID card scanning

Front and rear image capture

Ink-jet endorser

Single hand transport access

BARCODE decoding

Badge reader

Optional USB hub



CTS Electronics  
Corso Vercelli, 332  
10015 - Ivrea (TO) - Italy  
Phone: +39-0125-235611  
www.ctsgroup.it

### About CTS Electronics

Since 1980, CTS has been a leading manufacturer of cash and check solutions with 1,000,000+ banking peripherals and over 300,000 scanners installed across five continents. Our expertise includes: Document Processing Devices, Card Personalization Printers, OEM Modules and Dispensers, Cash and Coin Recycling and Processing Systems.